

Professional Development with the Further Mathematics Support Programme

Further Pure 1

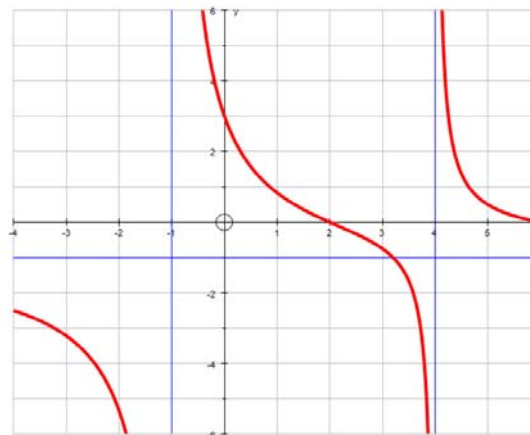
CPD Day

at **Abbeyfield School**

Chippenham, Wiltshire, SN15 3XB

Friday 11th June 2010

10:00am – 3:30pm



Sessions will include:

- Matrices
- Complex numbers
- Graphs and inequalities
- Proof by induction

Content relevant to all four specifications. Other topics can be added to suit delegates.

These sessions will be led by an experienced teacher of Further Maths and will comprise a review of the methods required for each topic, a discussion of common errors and pitfalls and a workshop on past paper questions. We will also look at the free online resources available from MEI.

Follow-up support will be available after the session in the form of Elluminate mentor sessions. The Elluminate system will also be demonstrated on the day. All delegates will also be given information regarding their local Further Maths Teacher Support Network.

The cost per delegate will be £60, or £50 for delegates from schools registered with the FMSP. This includes a comprehensive resource pack, break-time refreshments and lunch.

To book places, contact Jo Sibley (details below) **by Friday 28th May**.

In your application please let me know which specification you are likely to be teaching under and whether there are specific topics on which you would like to focus.

(No deposit will be required but payment will become due on the day of the course for all places booked, so please contact me by Monday 7th June if you wish to cancel. If you wish to be invoiced for the cost, please let me know to whom the invoice should be sent. Purchase order numbers are also acceptable. Cheques should be made payable to Poole Grammar School Further Maths Account.)

If this event does not meet your CPD requirements, contact Jo to discuss tailor-made solutions.

Jo Sibley – Further Mathematics Support Programme Area Coordinator

josibley@furthermaths.org.uk Tel: 07554 001243